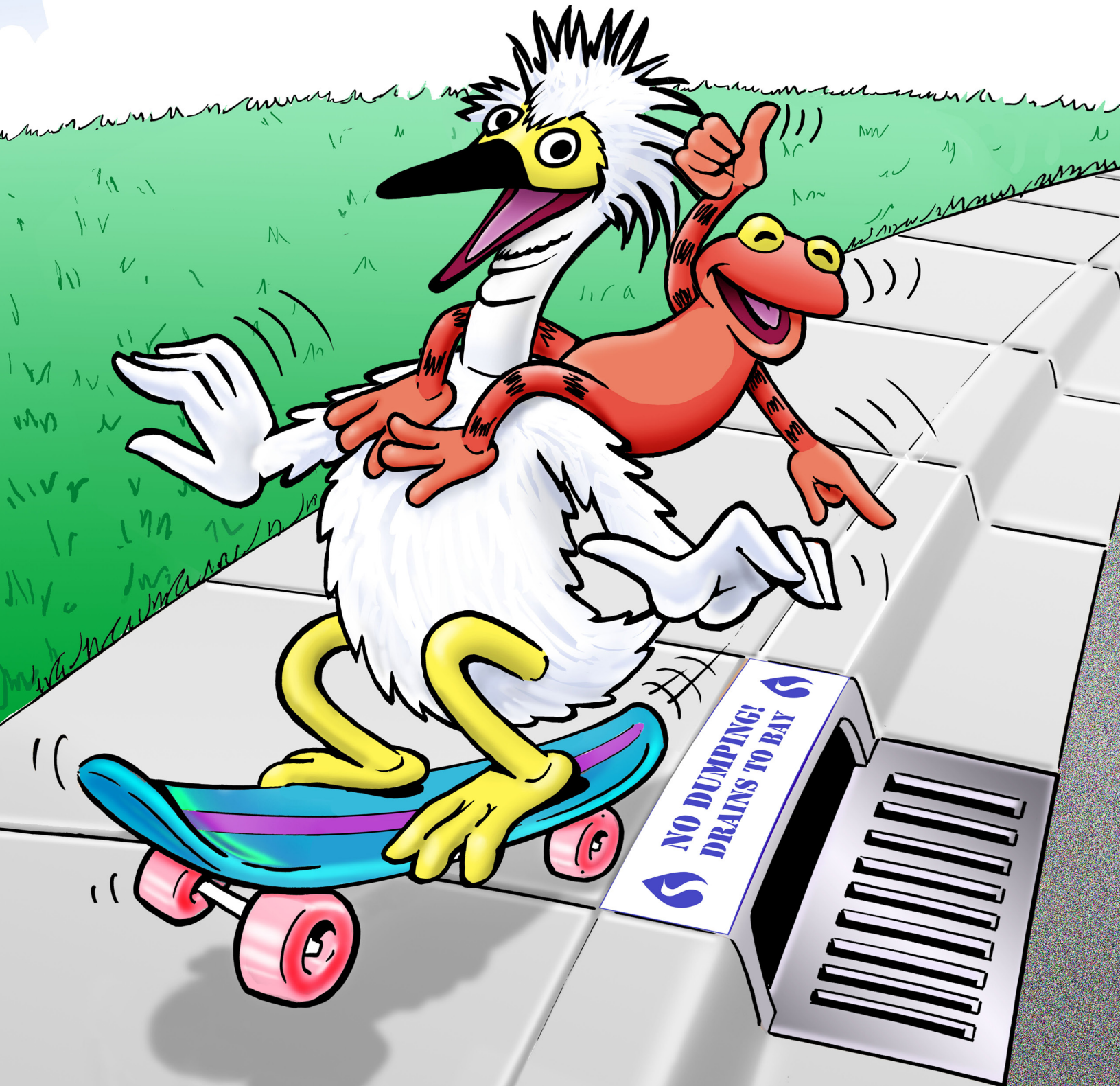
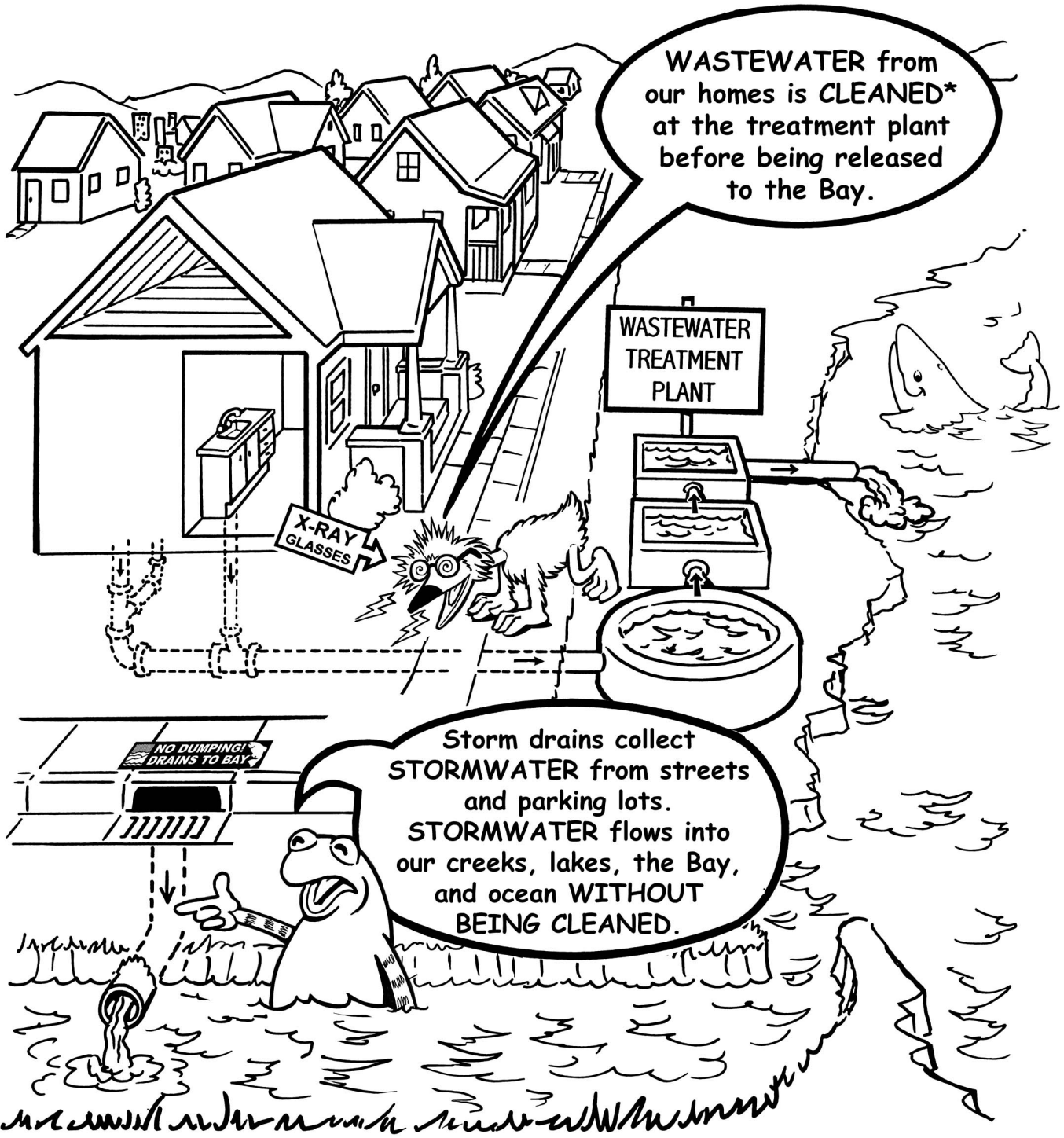


PROTECT Our WATER and WILDLIFE!

Help Us Keep Our Creeks, Lakes, and
the San Francisco Bay Clean!



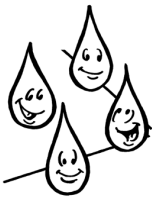
WHAT IS THE DIFFERENCE BETWEEN "STORM" WATER AND "WASTE" WATER?



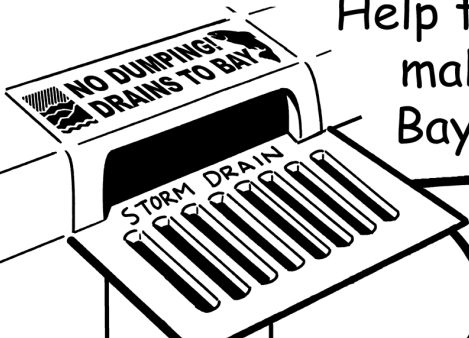
ACTIVITY:

Color the path of the STORMWATER from the storm drain to the creek and the Bay BLUE.
Color the path of WASTEWATER from the house to the treatment plant YELLOW.

* Some chemicals that are found in households (like paints, pesticides and motor oil) pass right through the treatment plant and into the bay.



Help the **STORMWATER** raindrops make it safely to creeks and the Bay. Remember: Only **RAIN** goes down the storm drain.

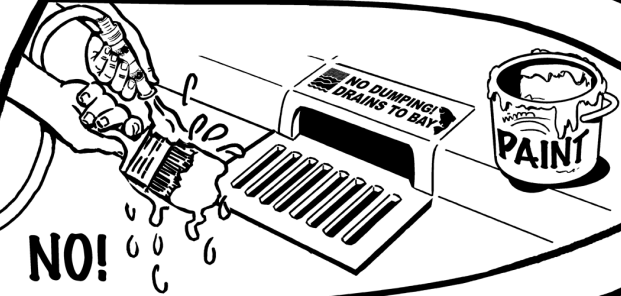


START

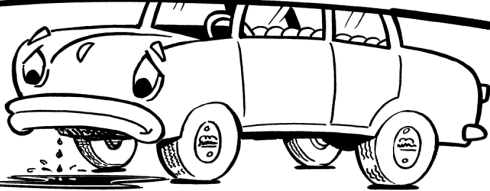
NO!



NO!



NO!



NO!



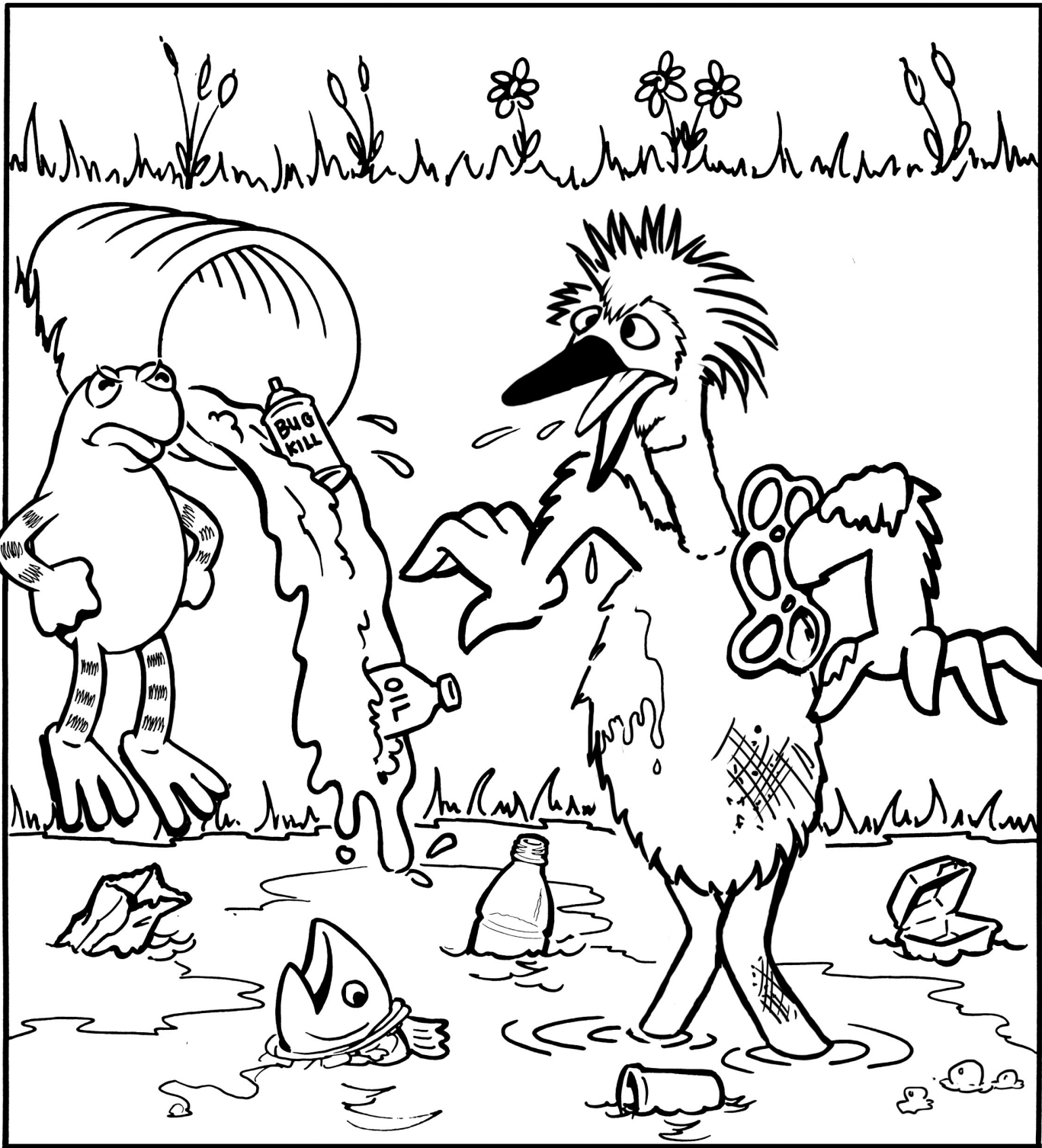
NO!

FINISH

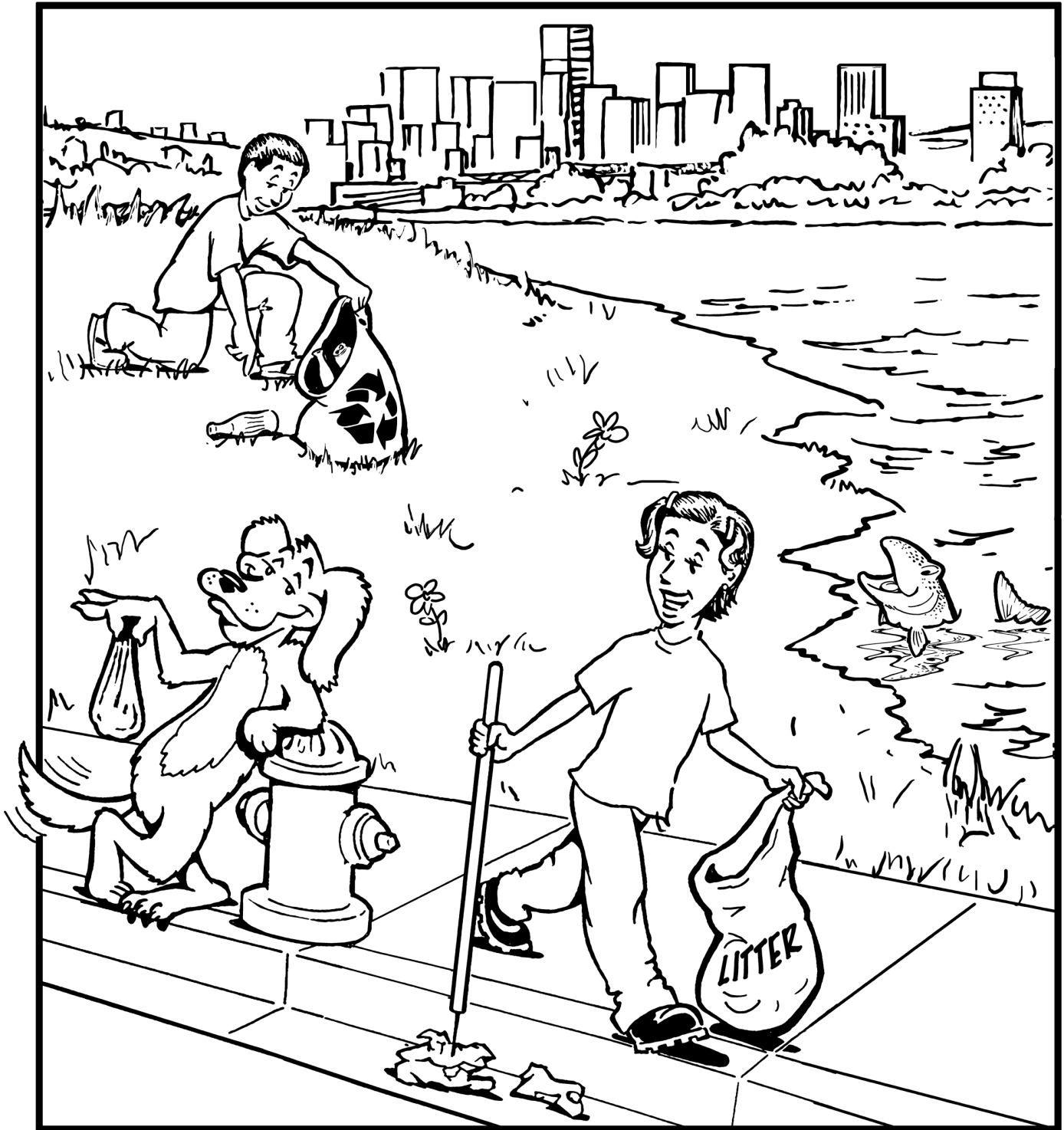




How would you like it if this happened in **your** home?



That's what happens to animals in **their** home when we let wastes go down a storm drain. Dirty motor oil, litter, bug killers, and soap pollute the water.

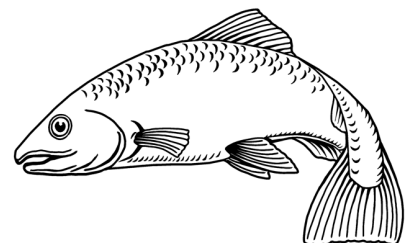
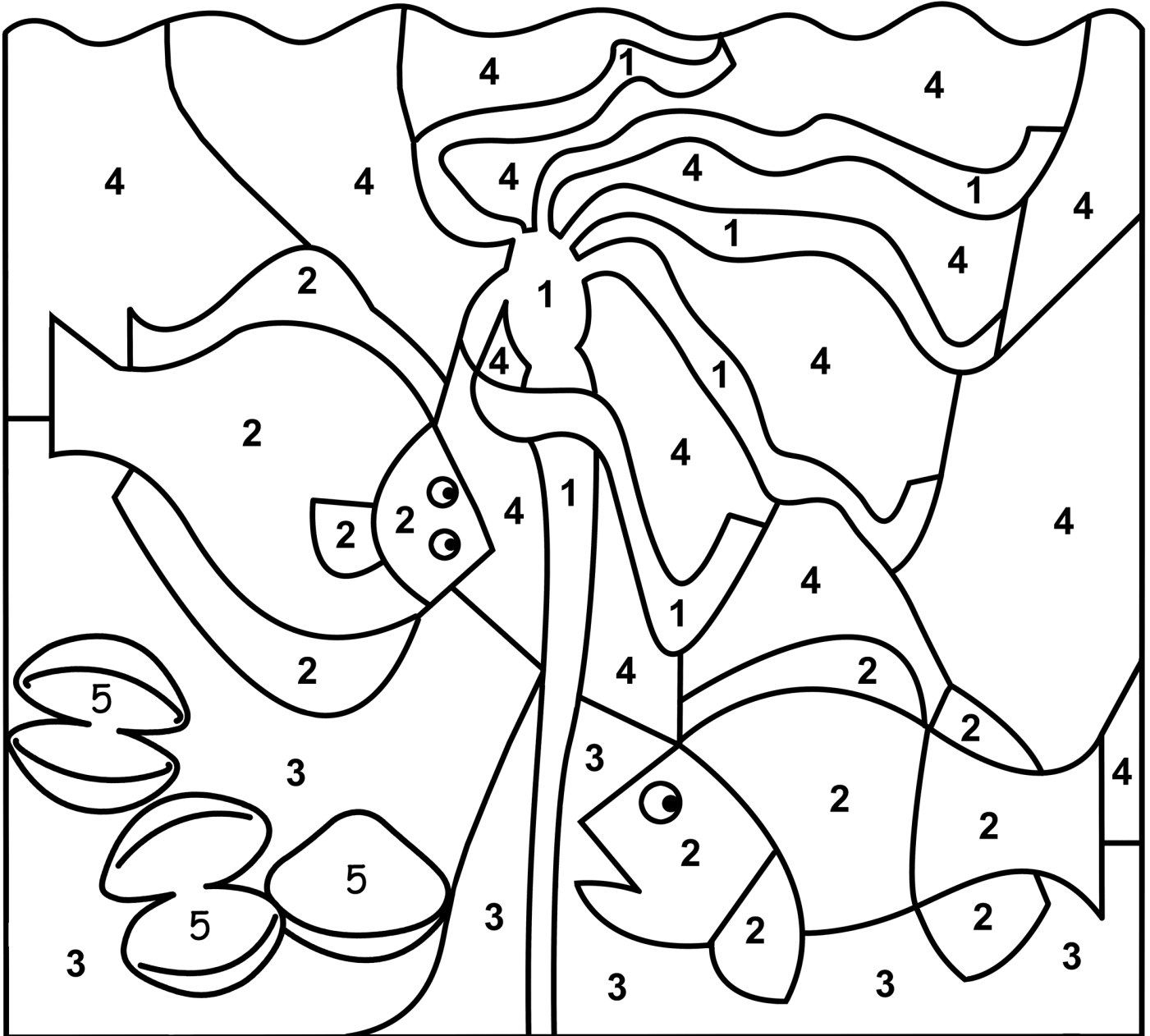


Help protect our water and wildlife! Pick up after your pet and dispose of the waste in the trash. Take part in community creek, lake, or shoreline cleanups. Always throw your trash in a garbage can. Remember to reduce, reuse, and recycle!

WHAT NEEDS CLEAN WATER?

Look at the color for each number. Color the numbers in the picture. See what needs clean water.

1 Green 2 Orange 3 Brown 4 Blue 5 Gray

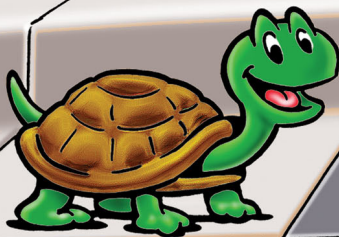




YOU can PROTECT CREEKS, LAKES, and the San Francisco BAY!



- Please, never dump anything into the storm drain or gutters.
- Pick up litter, trash and pet wastes. Put them in the garbage.
- Participate in a creek, lake or shoreline cleanup.
- Ask your parents to avoid using bug spray and to learn about less toxic ways to control pests.
- Tell your parents that oil, antifreeze, or brake fluid leaking out the car is bad for our water. Ask them to fix the leaks.



 **NO DUMPING!**
DRAINS TO BAY 



If it goes down the storm drain, it ends up in our water.

Having clean and healthy waterways is important to our daily lives. The Clean Water Program fosters an appreciation of the local environment, inspiring people to do their part to prevent water pollution during everyday activities.

Learn more about preventing water pollution and the Clean Water Program at www.cleanwaterprogram.org.

Protecting Alameda County Creeks, Wetlands & the Bay