

RECOMMENDED VFR PROCEDURES

- ♦ Use preferred arrival and departure corridors
- ♦ Keep your patterns tight
- ♦ Avoid overflying residential areas
- ♦ Avoid straight-in VFR arrivals
- ♦ Avoid low passes and formation arrivals
- ♦ Avoid abrupt maneuvering, power, and sudden propeller RPM changes
- ♦ Watch those propeller helical tip speeds!

HELP US TO REDUCE NOISE!

- Adhere to Voluntary Restraint from Night Flying Policy (10 PM - 6 AM local)**
- ARRIVALS**
- ♦ Remain at traffic pattern altitude (1400' MSL) as long as practical before descending to land.
- DEPARTURES**
- ♦ Climb as quickly as practical to pattern altitude.
 - ♦ Avoid intersection takeoffs

**LIVERMORE MUNICIPAL AIRPORT (KLVK)
PILOT INFORMATION GUIDE**
www.cityoflivermore.net/airport

LOCATION

N 37° 41' 36.20" W 121° 49' 13.30"
 N 37° 41.603333' W 121° 49.221667'
 N 37.6933889° W 121.8203611°

Elevation : 400 ft MSL / 121.9 m (surveyed)
 Variation : 13.7° E (1/2015)
 3 miles West of Livermore, CA (zip = 94551)

AIRPORT OPERATIONS

Airport Use : Open to the public
 Sectional Chart : **SAN FRANCISCO**
 Control Tower : YES (0700-2100 PST/PDT daily)
 ARTCC : OAKLAND CENTER
 FSS : OAKLAND FSS
 (1-866-469-7828)
 NOTAM's Facility : LVK NOTAM-D Service Available
 FBO Hours : 0600-1800 (925-315-4130)

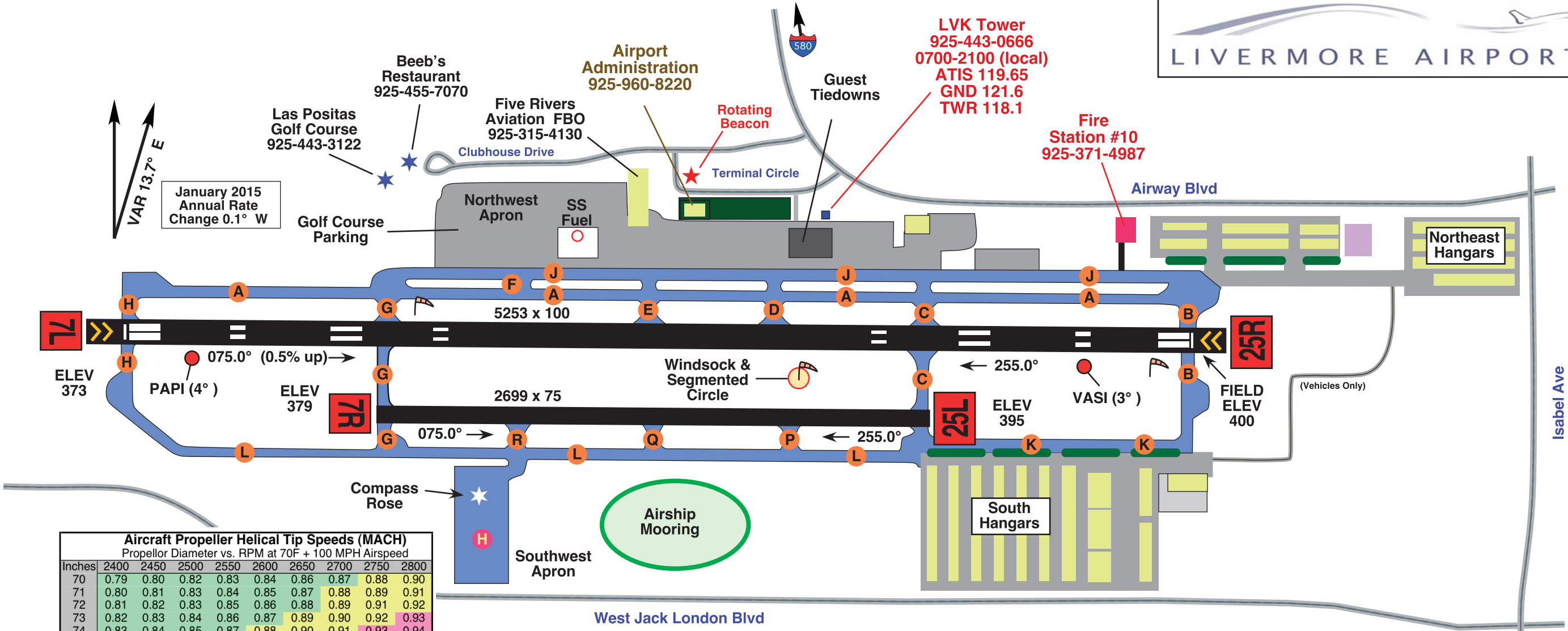
Pattern Altitude: 1400 ft MSL
 Wind Indicator: Midfield, Lighted
 Segmented Circle: YES
 Lights

07L/25R : Lighted, PCL on CTAF (3x, 5x, 7x)
 07R/25L : NONE
 Taxiways : Lighted, PCL on CTAF
 Beacon: White-Green
 (lighted land airport)

COMMUNICATIONS

ATIS	119.65	925-447-9516
TOWER	118.1	925-443-0666, 0700-2100 LCL (when necessary)
GROUND	128.2	925-443-0666, 0700-2100 LCL (when tower closed)
ASOS	121.6	925-606-5412
CTAF	119.65	
ILS/LOC	118.1	
UNICOM	110.5	(monitored by FBO)
NDB (REIGA)	122.95	
	374	

NORCAL APPROACH : 123.850 RWY 07R/07L/25R/25L
 NORCAL DEPARTURE: 125.350 RWY 25R/25L
 125.850 RWY 07R/07L



Aircraft Propeller Helical Tip Speeds (MACH)
Propellor Diameter vs. RPM at 70F + 100 MPH Airspeed

Inches	2400	2450	2500	2550	2600	2650	2700	2750	2800
70	0.79	0.80	0.82	0.83	0.84	0.86	0.87	0.88	0.90
71	0.80	0.81	0.83	0.84	0.85	0.87	0.88	0.89	0.91
72	0.81	0.82	0.83	0.85	0.86	0.88	0.89	0.91	0.92
73	0.82	0.83	0.84	0.86	0.87	0.89	0.90	0.92	0.93
74	0.83	0.84	0.85	0.87	0.88	0.90	0.91	0.93	0.94
75	0.83	0.85	0.86	0.88	0.89	0.91	0.92	0.94	0.95
76	0.84	0.86	0.87	0.89	0.90	0.92	0.93	0.95	0.96
77	0.85	0.87	0.88	0.90	0.91	0.93	0.94	0.96	0.97
78	0.86	0.88	0.89	0.91	0.92	0.94	0.95	0.97	0.98
79	0.87	0.89	0.90	0.92	0.93	0.95	0.97	0.98	1.00
80	0.88	0.90	0.91	0.93	0.94	0.96	0.98	0.99	1.01

FOR ADDITIONAL AIRPORT INFORMATION
WWW.CITYOFLIVERMORE.NET/AIRPORT

**CAUTION : BE ALERT TO RUNWAY CROSSING CLEARANCES
READ BACK OF ALL RUNWAY HOLD INSTRUCTIONS IS REQUIRED!**

